

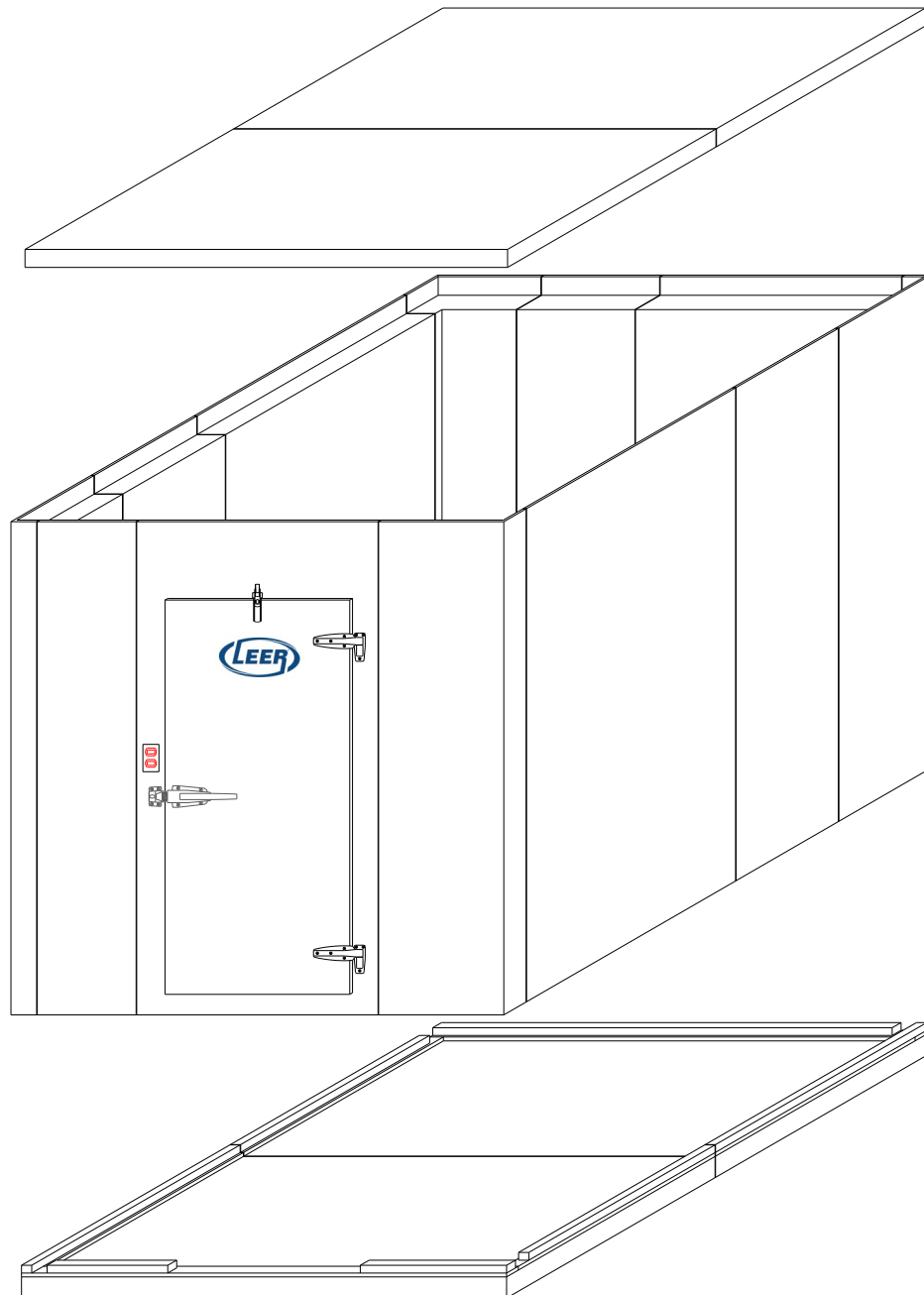


Walk-In Coolers & Freezers

## Installation Manual

Leer, Inc  
Carroll Operations  
19705 Hwy. 30 West  
Carroll, IA 51401  
1-800-764-6834  
Fax 712-792-6748  
E-Mail: [walkins@leerinc.com](mailto:walkins@leerinc.com)

## Walk-In Cooler and Freezer Installation Manual





Walk-In Coolers & Freezers

## **Installation Manual**

### **Table of Contents**

Cover .....	1
Table of Contents .....	2
Important Notice of Shipment.....	3
Safety.....	3
Job Site Preparation.....	4
Job Site Layout.....	4-5
Assembly of Walk-In .....	6-7
Assembly of Floor Panels .....	8
Wall Panel Sealant .....	9-10
Door Details .....	11-12
Assembly of Ceiling Panels .....	13-15
Assembly of Header & Sill .....	16
Electrical.....	17-18
Rubber Roof Free Standing.....	19
Rubber Roof Attaching to Building.....	20-23
Dial Thermometer Calibration .....	24
Final Inspection .....	24
Maintenance .....	24
Warranty.....	25
Walk-In Notes .....	26

**The information in this manual is a work in progress. We never stop improving and refining our products. If you have a question and do not find it addressed in this manual, please let us know, and we will do our best to accommodate you. Please note: Everything in this manual may not apply to what you have purchased.**

**We welcome the opportunity to be of service to you.**

**Customer Service Department: 1-800-764-6834**

**Email: [walkins@leerinc.com](mailto:walkins@leerinc.com)**

**Visit our website: [www.leerinc.com](http://www.leerinc.com)**



Walk-In Coolers & Freezers

## **Installation Manual**

### **\*\*\*Important Notice\*\*\***

This shipment has been carefully inspected, checked and properly packaged before shipment. The shipping containers and our method of packaging have been thoroughly tested. We fully expect your merchandise to arrive in good condition.

When the carrier picked up the shipment at our dock, it was in good condition and technically it became your property at that time. Any damages, whether obvious or hidden, must be reported to the transporting company within 10 days of receipt of the shipment at your premises to avoid forfeiting claims for damages.

If the damage is obvious, write "RECEIVED DAMAGED" on the freight bill and have the driver sign the freight bill.

The packing list enclosed should be checked upon arrival to be sure no shortages exist. Once the freight bill has been signed free and clear, we have no recovery from the carrier on shortages or obvious damages, and Leer, Inc. cannot accept responsibility. If there are any questions regarding this shipment please notify us within 7 days.

### **SHIPMENTS DAMAGED IN TRANSIT BUT NOT OBVIOUS UPON ARRIVAL:**

Leave the item(s), packing material and carton "AS-IS". Notify your carrier's local office, and ask for an immediate inspection of the carton and its contents. Notify LEER, INC. of your problem.

After inspection has been made by the carrier and you have received acknowledgment in writing as to the damage, notify LEER, INC. for the action you desire to resolve the problem. Be prepared to provide your purchase order number, our serial tag number, and our invoice number

**It is your responsibility to follow the above instructions, or the carrier and/or LEER, INC. will not honor any claims for damage.**

### **TOOLS AND SUPPLIES GENERALLY REQUIRED**

Some of the tools listed below may be required for specific types of installations if the walk-in is supplied with a floor, vinyl screed, wood screed, or flat bottom sidewalls.

If you are unsure or have any questions contact the LEER, INC. walk-in technical department.

**\* Tape measure   \* 4' level   \* Chalk line   \* Miter saw   \* Adjustable wrench  
\* Screwdrivers   \* Shims   \* Lag anchors or suitable fasteners  
\* Wrench and Socket set   \* Hammer   \* Ram set gun   \* Power drill**

**NSF certified silicone sealant (enough to get you started), butyl (for freezers), and a cam-lock hex wrench are provided**

**Supporting materials for ceiling hangers, such as Cable or Threaded rod, are supplied by others.**

### **THINK SAFETY**

#### **USE THESE SAFETY TIPS**

1. To avoid injury while assembling the walk-in, LEER, INC. recommends protective eye gear, hard hat, gloves, and steel toe footwear.
2. Prevent back injuries. Walk-in panels are heavy and care should be taken using ergonomic lifting and handling methods.
3. Any electrical work should be done by a licensed electrician.
4. Any refrigeration work should be done by a licensed refrigeration company.
5. Never work alone. Always have another person helping or observing in case of an emergency.
6. Follow installation instructions. The information provided will assist in the correct method of walk-in assembly & installation.
7. If unsure about something, contact your local representative or the LEER, INC. walk-in technical department at 1-800-764-6834.



Walk-In Coolers & Freezers

## **Installation Manual**

### **Job Site Preparation**

A level floor is critical to the proper installation of any walk-in cooler or freezer, even if the walk-in has a floor. The high point in the floor must be determined and then shims (not furnished) must be used as required to assure the floor or screeds are level.

A stable floor is required in order to have a properly functioning walk-in. Any movement of the floor underneath the walk-in will void the factory warranty. This movement can be caused by conditions such as the soil freezing and thawing.

It is important to check overhead for any obstructions that would cause a safety hazard (electrical wires, steam pipes or any other items that could cause accidents). It is also important to check at this time for obstructions that interfere with the height of the walk-in.

The installer must see that there is proper ventilation and humidity control around both the top and all walls of the walk-in. A minimum of 3" air space should be maintained along with adequate ventilation to prevent condensation. Air should be moving between 30-45 minutes out of every hour around a indoor walk-in. If dew point is reached on the outside surface of the walk-in, condensation will occur. The damage this condensation causes will NOT be covered by Leer, Inc. warranty.

### **Job Site Layout**

It is extremely important that the walk-in is installed both level and square. A few extra minutes used to square and level the walk-in at the beginning stages of installation will save a lot of time and aggravation later.

Remember that we recommend that a 3" air space around all (4) four sides of the walk-in.

To find square, you must first find your start point. From this point chalk a line 3' down. Now go back to your start point and chalk a line over 4'. You now can check for square by connecting the end of the 2 chalk lines. This measurement should be 5'. If this is not true you must now move one of the 2 lines in or out until you come to this 5' line. Continue as shown in Diagram 1 (on page 5) until you have exceeded the lengths and widths of your box.

The layout lines that you have now established will be the exterior of the walk-in. If your walk-in is wood screed you will now mark a line 3/4" on the inside of that line. This dotted line (see Diagram 1 on page 4) is the location for the outside edge of the wood screed that is to be caulked and fastened to the concrete floor with a Ram Set gun or other fastening device. If your walk-in is vinyl screed you will work off the 1st established line, this line will be the outside edge of the vinyl screed that is to be caulked and fastened to the concrete floor with a Ram Set gun or other fastening device. Recommended sealants are butyl for a freezer, and butyl or premium quality silicone for a cooler.

As you install the wood screed, you must hold the screed back 5 1/2" for 4" walls and 7" for 5-1/2" walls at the corners (see Diagram 2 on page 4). A detail of your screed layout will be included with your blueprint for the new walk-in.

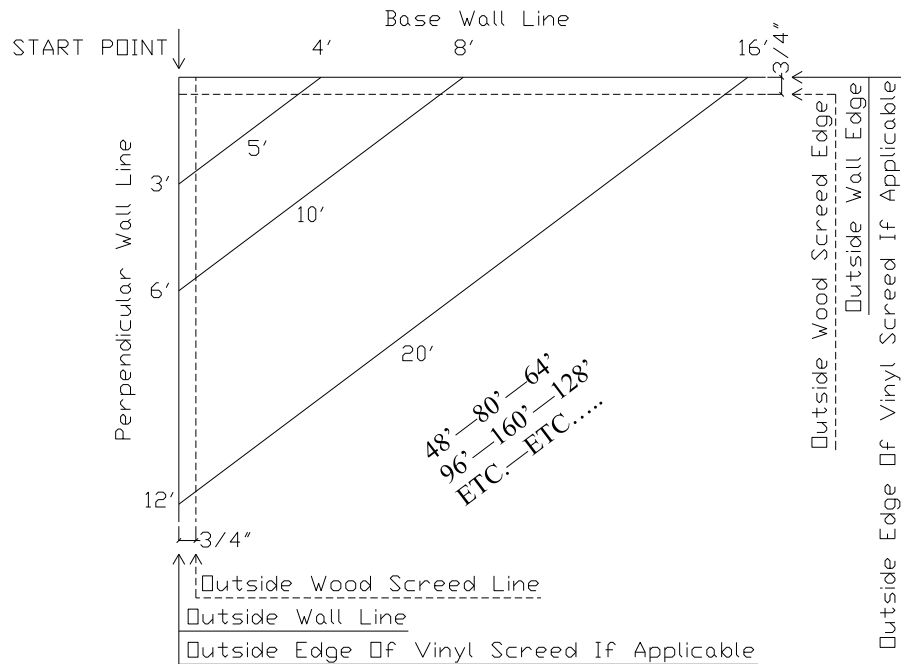


## Installation Manual

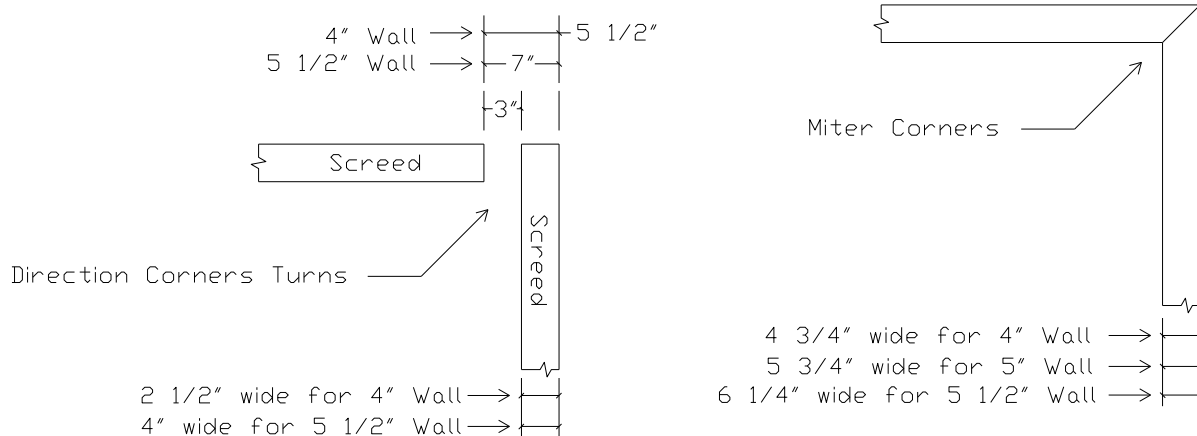
Walk-In Coolers & Freezers

### Job Site Layout Continued:

**Diagram 1**



**Diagram 2**



### **Wood Screenshot**

### **Vinyl Screenshot**

Note: Individual screenshot layouts are provided with walk-in blueprint included in the parts box. Both types of screenshot are sent in 96" pieces. They will need to be cut to length and mitered if needed on site.



Walk-In Coolers & Freezers

## Installation Manual

### Assembly of Walk-In

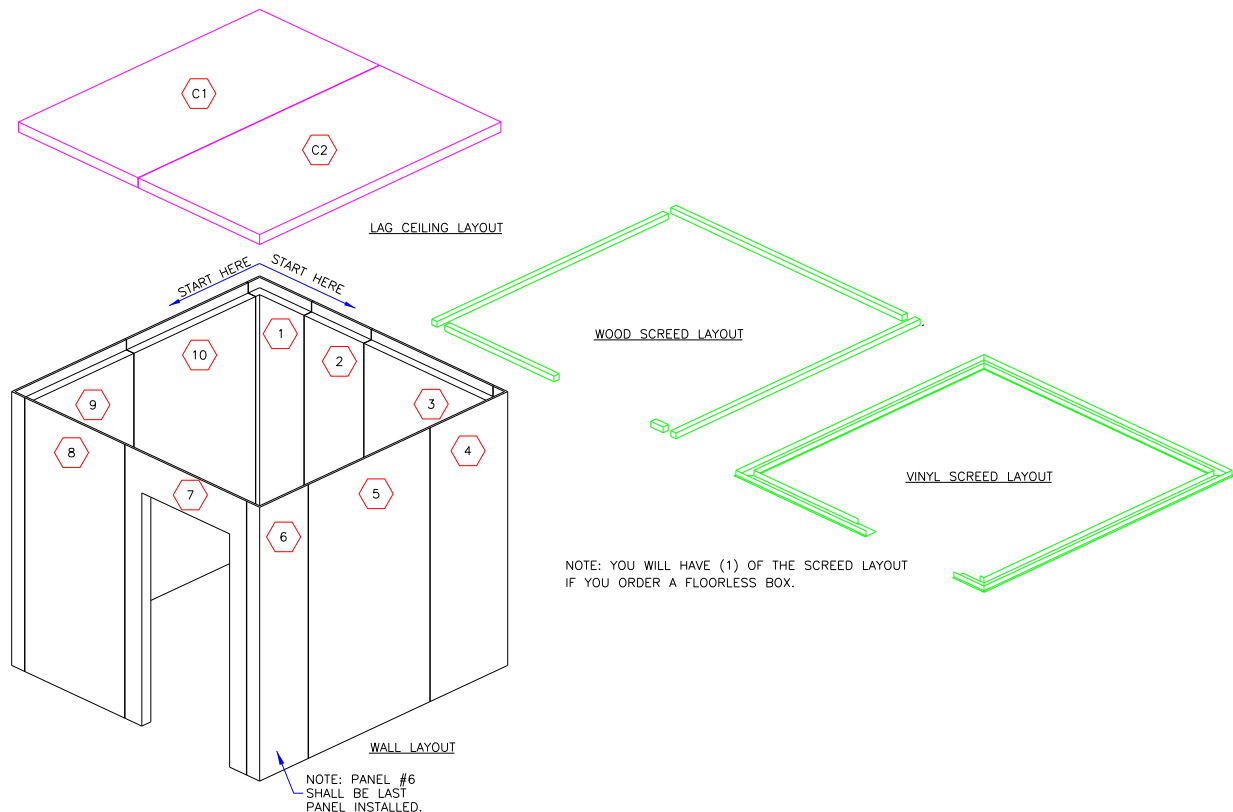
The following drawing is a general plan and will not correspond to the actual cooler or freezer you are now installing.

Not all panels are marked with a panel number that will match your actual drawing for the walk-in that you are currently installing. Often, many panels are interchangeable with other like panels and are therefore not numbered. Non-interchangeable panels will be marked with a panel number. These numbers will be on the end or side of each panel. Each panel will have a serial number on the rail edge.

It is very important to place a large bead of sealant on the male edge behind the gasket (warm side of panel, nearest the exterior) before fitting them together. Failure to properly seal panel seams as instructed can cause panel damage and thereby voids panel warranty. The sealant provided by LEER, INC. is enough to get you started. Silicone and/or butyl for installation is by others.

You may find that due to site restrictions it is impossible or impractical to begin with the #1 panel and continue with the exact sequence of the panel numbers on your walk-in plan. The basic rule to apply in deciding which panel to start with, is to start with the corner panel that is the least accessible. If your walk-in is a cooler/freezer combo and one side has a floor, the compartment with a floor will be the first compartment to install. Use 5/16" hex wrench provided in parts box to turn cam locks. If the cam lock hook does not engage the pin in the adjoining panel, it may need to be reset. To reset the cam lock, reverse the rotation until tight.

### Walk-In Without Floor



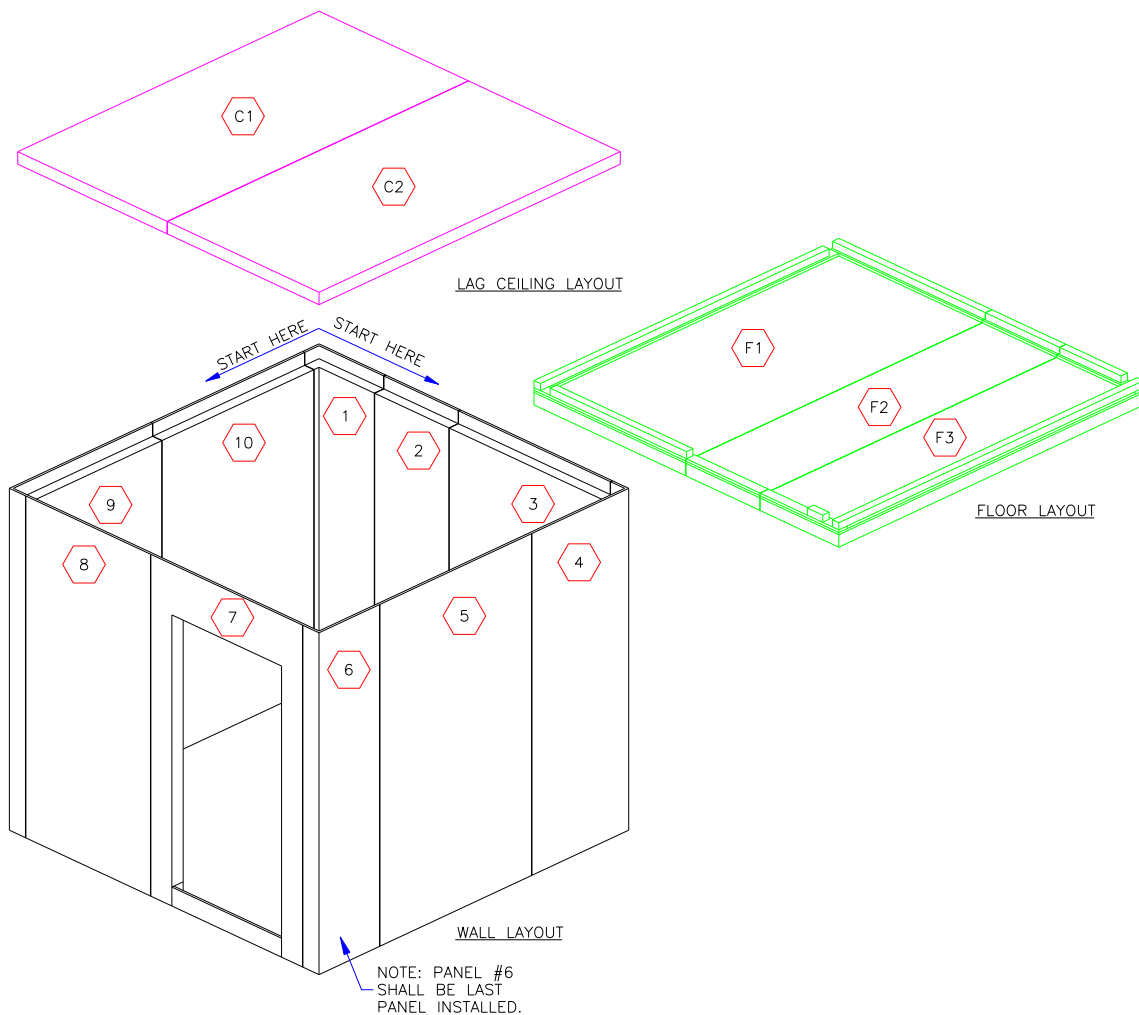


Walk-In Coolers & Freezers

## Installation Manual

### Walk-In With Floor

Note: Not all floor panels will be shipped with your Wood Screed installed. Quick Ship walk-in floors have the screed shipped loose so you can move your door to your preferred location (interchanges with any 47" Quick Ship wall panel). If your screed is not installed you will need to refer to your individual blue print showing the screed layout for the location and length required. All wood screed is sent in 96" pieces.





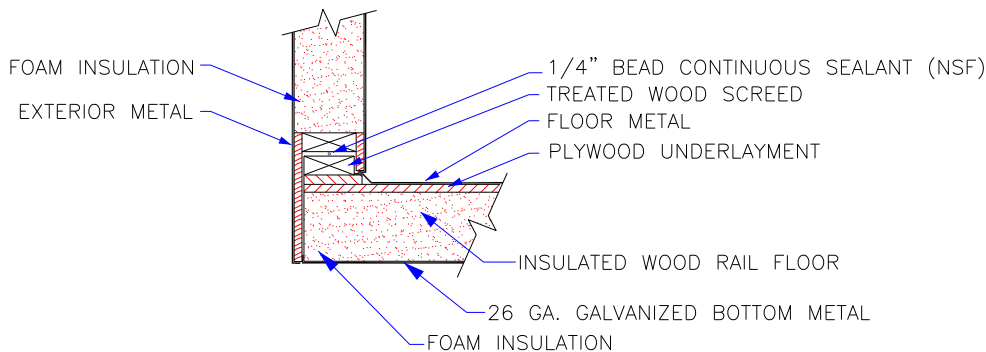
Walk-In Coolers & Freezers

## Installation Manual

### Floor Panel Installation

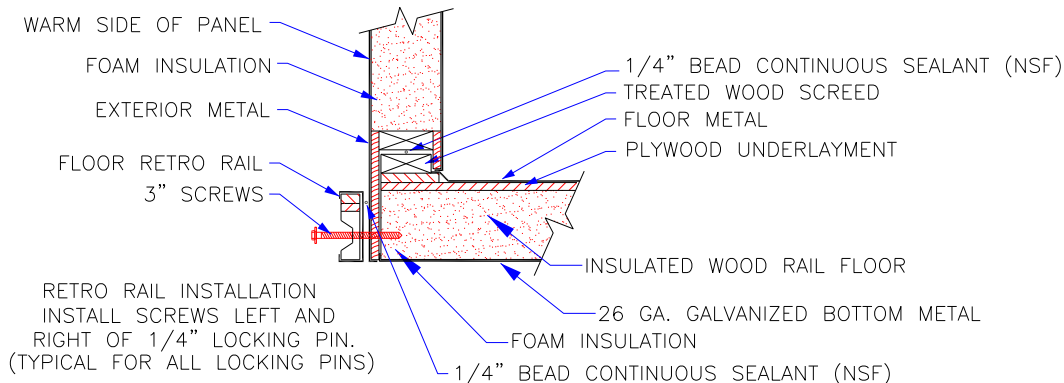
The insulated floor supplied by Leer, Inc. is installed similar to the wall panels. It is very important to place a large bead of sealant on the male edge behind the gasket (warm side of panel, nearest the exterior) before fitting them together. Failure to properly seal panel seams as instructed can cause panel damage and thereby voids panel warranty. Once the walk-in is erected, you must place a small bead of sealant over each floor panel seam and around the buttons used to plug the cam wrench holes to insure that no moisture infiltrates the floor panel. A premium grade silicone works well for this application. If you have a combo box using retro rails, you must install the complete box (typically the freezer) first before attaching your retro rails to continue building off them.

#### WOOD RAIL WALL PANEL WITH FLOOR

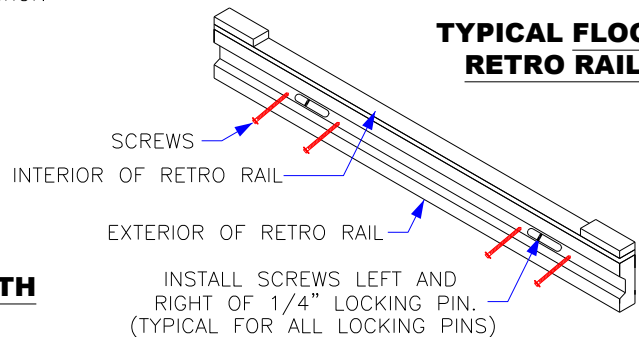


A FLOOR RETRO RAIL IS USED WITH COMBO BOXES THAT HAVE A DIFFERENT CEILING/FLOOR THICKNESS. THE RETRO IS TYPICALLY ON THE COOLER SIDE. ASSEMBLY STARTS ON THE BOX WITH OUT THE RETRO RAIL.

#### WOOD RAIL FLOOR WITH RETRO RAIL



#### TYPICAL FLOOR RETRO RAIL







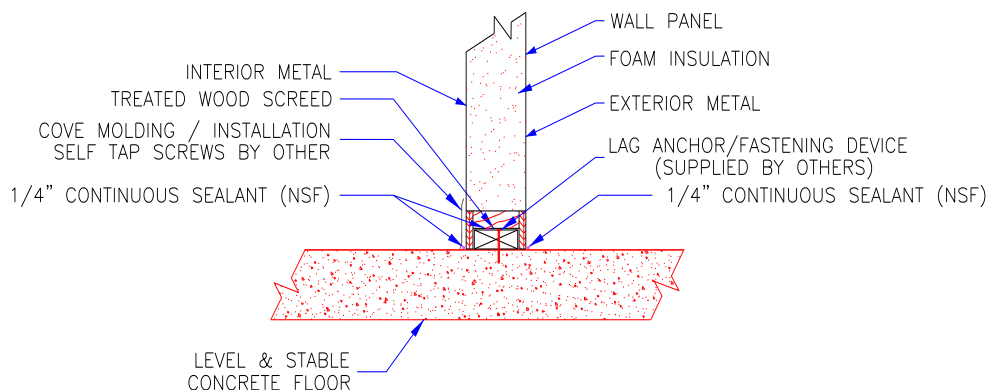
## Installation Manual

Walk-In Coolers & Freezers

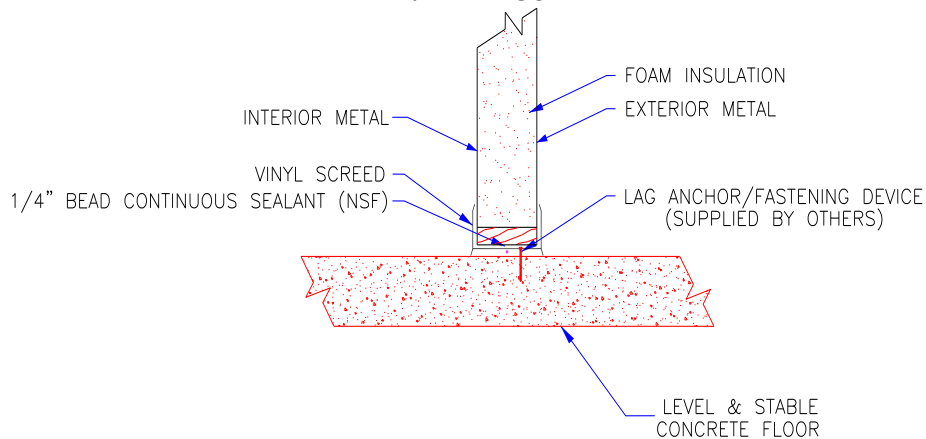
### Wall Panels

See drawings below for sealant instructions on Wall Panels. The first two diagrams are for walls with non-insulated concrete floor. It is very important to place a large bead of sealant on the male edge behind the gasket (warm side of panel, nearest the exterior) before fitting the wall panels together. Failure to properly seal panel seams as instructed can cause panel damage and thereby voids panel warranty. The sealant provided by LEER, INC. is enough to get you started. Silicone and/or butyl for installation is by other.

#### **COOLER WALL PANEL WITHOUT FLOOR W/ WOOD SCREED**



#### **COOLER WALL PANEL WITHOUT FLOOR W/ VINYL SCREED**





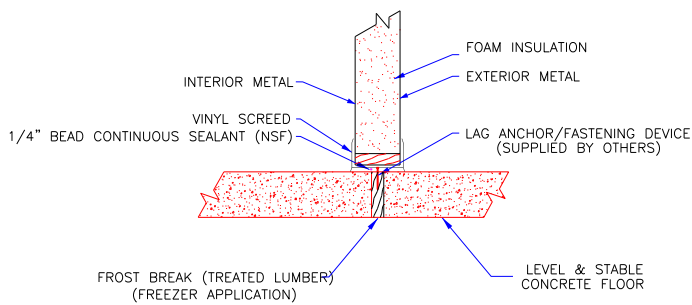
Walk-In Coolers & Freezers

## Installation Manual

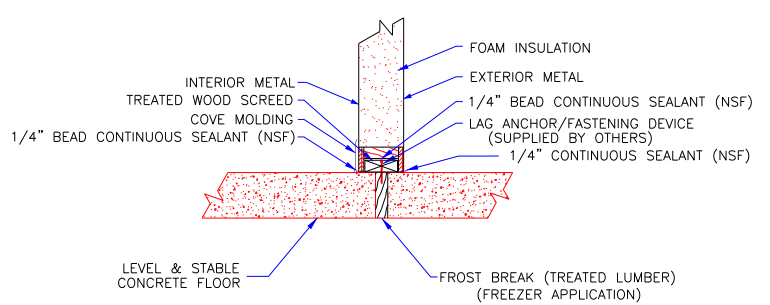
### Wall Panels Continued

If an insulated sub-floor with a concrete wearing surface is used, the insulation must be installed in the proper manner. In some cases, ventilation beneath the insulation must be used. For more information and suggested methods of insulating beneath the concrete slab, please contact a qualified contractor experienced in insulated slabs, or call Leer, Inc. at 1-800-764-6834.

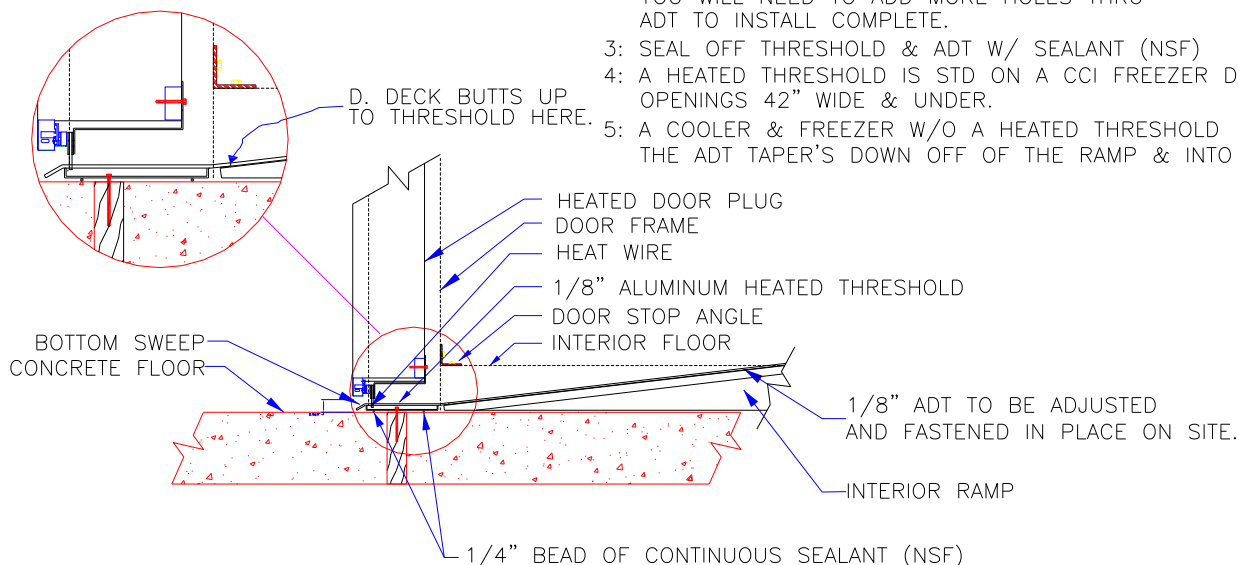
**WALL PANEL SHOWING (VINYL SCREED)  
W/ FROST BREAK**



**WALL PANEL SHOWING (WOOD SCREED)  
W/ FROST BREAK.**



### INTERIOR RAMP FREEZER



- 1: INSTALL DOOR AND THRESHOLD
- 2: INSTALL RAMP ADT BY ADJUSTING ADT UP TO THRESHOLD, THEN FASTEN IN PLACE. YOU WILL NEED TO ADD MORE HOLES THRU ADT TO INSTALL COMPLETE.
- 3: SEAL OFF THRESHOLD & ADT W/ SEALANT (NSF)
- 4: A HEATED THRESHOLD IS STD ON A CCI FREEZER DOOR OPENINGS 42" WIDE & UNDER.
- 5: A COOLER & FREEZER W/O A HEATED THRESHOLD THE ADT TAPER'S DOWN OFF OF THE RAMP & INTO THE OPENING.



Walk-In Coolers & Freezers

## Installation Manual

### Door Details

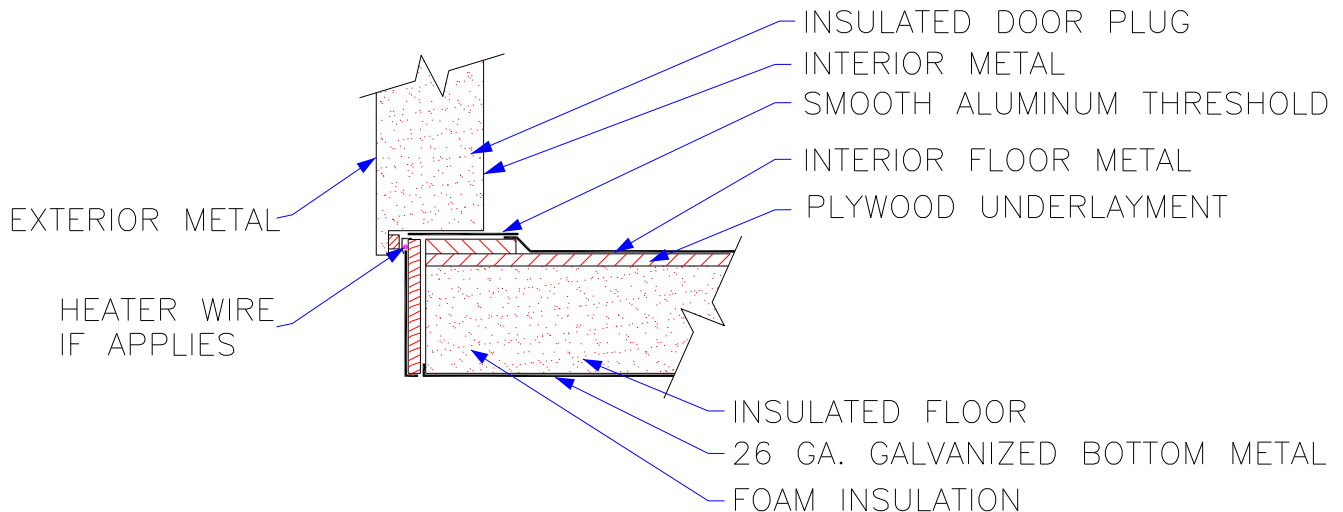
It is extremely important to make sure that all doors and jambs are properly aligned prior to installing the ceiling of the walk-in. Proper alignment requires that each door jamb is plumb and should be checked with at least a 4' level. The door opening must be square and should be checked by measuring diagonally from each direction. For all threshold applications, after the door and frame are installed, it is necessary to install the threshold. All thresholds require caulking between and around the perimeter of the threshold & finished floor. After caulking is complete, fasten the threshold to the floor.

Freezer door plug & door frame heaters are 120 volts and the electricity should not be connected until after the refrigeration system is operating. Without refrigeration, the heaters can/will become excessively hot and cause a short circuit. If this happens the heater will need to be replaced.

**Note:** You need to wire your heater wire to constant power. **You do not want it turning off with your light switch.**

If your walk-in door is opening through an existing wall, you must contact Leer, Inc. for a drawing giving the recommended rough opening for your application.

### TYPICAL OVERLAP DOOR WITH FLOOR





Walk-In Coolers & Freezers

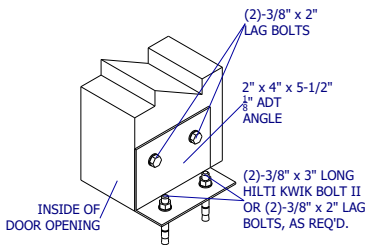
## Installation Manual

### Door Details Continued

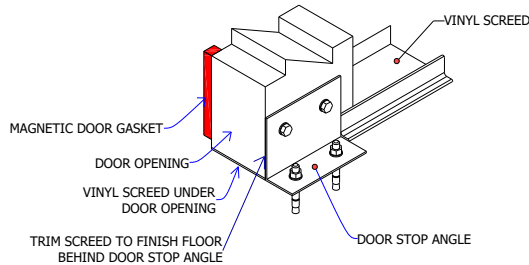
The bottom of the door without a floor has a wiper gasket that is adjustable. Simply loosen the screws on the bottom of the door and slide the bracket connected to the wiper gasket up or down to the desired level. The wiper gasket should gently sweep—not drag—the threshold or the concrete floor.

Two angle brackets (door stop angles) are furnished and should be fastened to the floor at each of the interior door jambs after the door is properly sealing to the frame. Angle brackets will hold the frame in place. If you are using Vinyl Scream you must notch back the vinyl cove at magnetic gasket and door stop angle area. See Detail below.

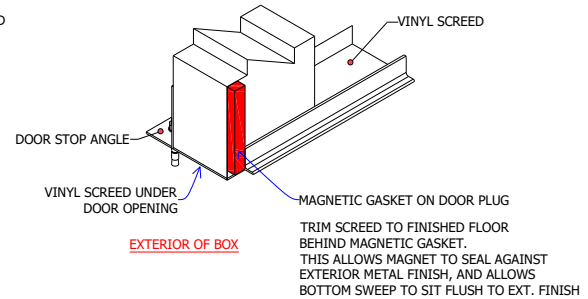
**To seal door to the frame, push door frame legs in or out until the magnetic gasket seals tightly, then fasten the brackets to floor.**



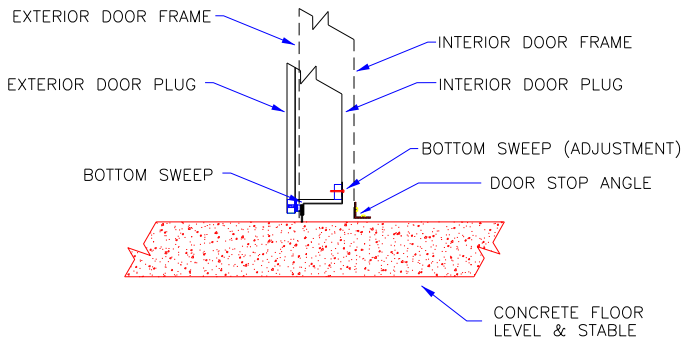
**INSTALL (1) DOOR STOP ANGLE ON EACH SIDE OF OPENING AT INTERIOR OF BOX**



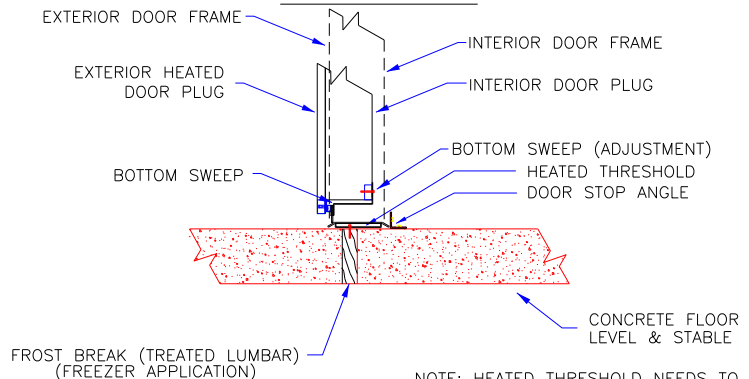
**INSTALL (1) DOOR STOP ANGLE ON EACH SIDE OF OPENING AT INTERIOR OF BOX**



#### **BOTTOM SWEEP GASKET**



#### **TYPICAL NON-PALLET FREEZER DOOR WITHOUT FLOOR**



NOTE: HEATED THRESHOLD NEEDS TO BE SECURED TO FLOOR AND SEALED. HEATED DOOR PLUG TO BE PLUGGED INTO GFCI. HEATED THRESHOLD ARE FOR DOORS 42" & SMALLER



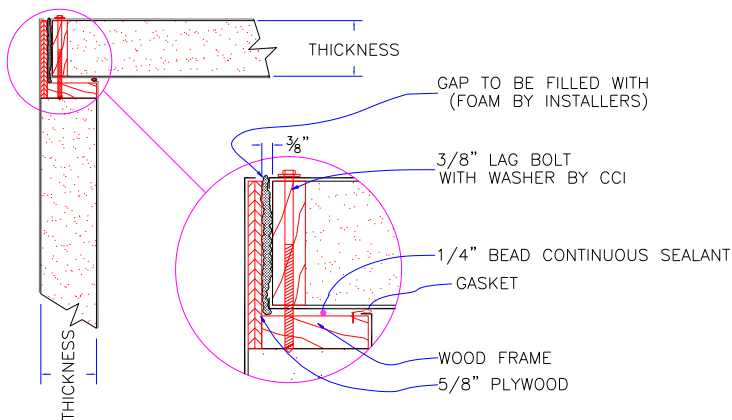
## Installation Manual

Walk-In Coolers & Freezers

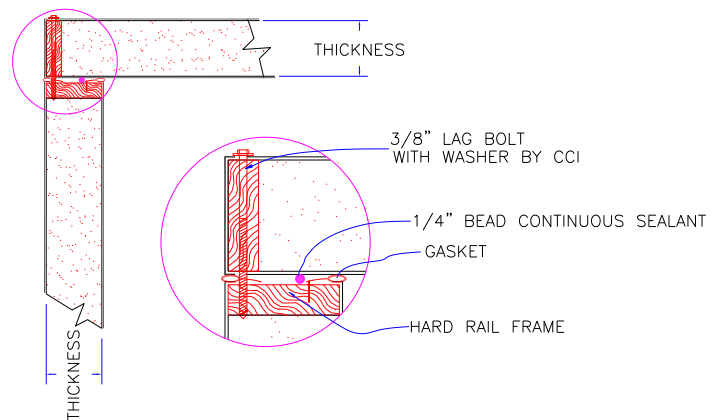
### Cam and Lag Down Ceilings

Leer, Inc. has (2) two ceiling styles. Standard style is the wood rail lag down style ceiling. The ceiling panels fit inside the skirt on top of the wall panels and are lagged down using the lag screws supplied by Leer, Inc.. Sealant should be used prior to laying the ceiling on the wall panel. The void between the outside edge of the ceiling and the wall panel must be filled with spray can foam before the refrigeration system is activated. This is an important step that prevents condensation from collecting at the wall/ceiling joint. Failure could cause ice to form on freezer applications, and would not be covered by manufacturers warranty. Due to product storage requirements, spray can foam is not provided by Leer, Inc.

#### TYPICAL WOOD LAG CEILING.

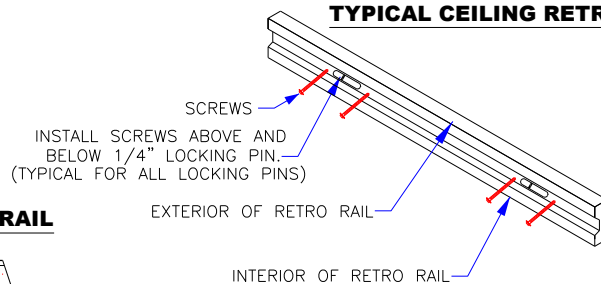


#### TYPICAL HARD RAIL LAG CEILING.

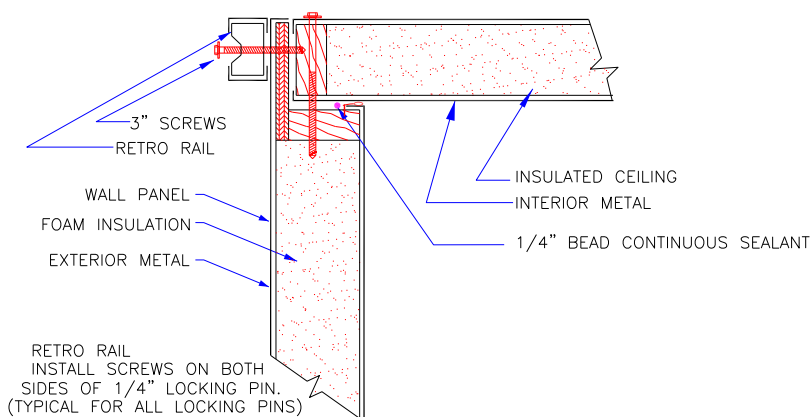


A CEILING RETRO RAIL IS USED WITH COMBO BOXES THAT HAVE A DIFFERENT CEILING THICKNESS. THE RETRO IS TYPICALLY ON THE COOLER SIDE.

#### TYPICAL CEILING RETRO RAIL



#### TYPICAL WOOD LAG CEILING WITH RETRO RAIL





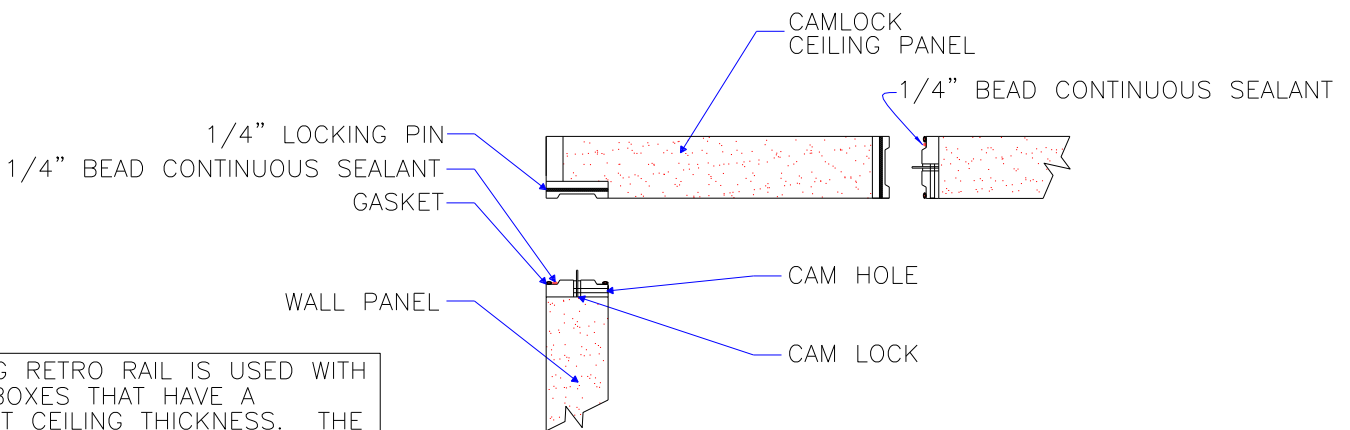
Walk-In Coolers & Freezers

## Installation Manual

### Ceilings Continued

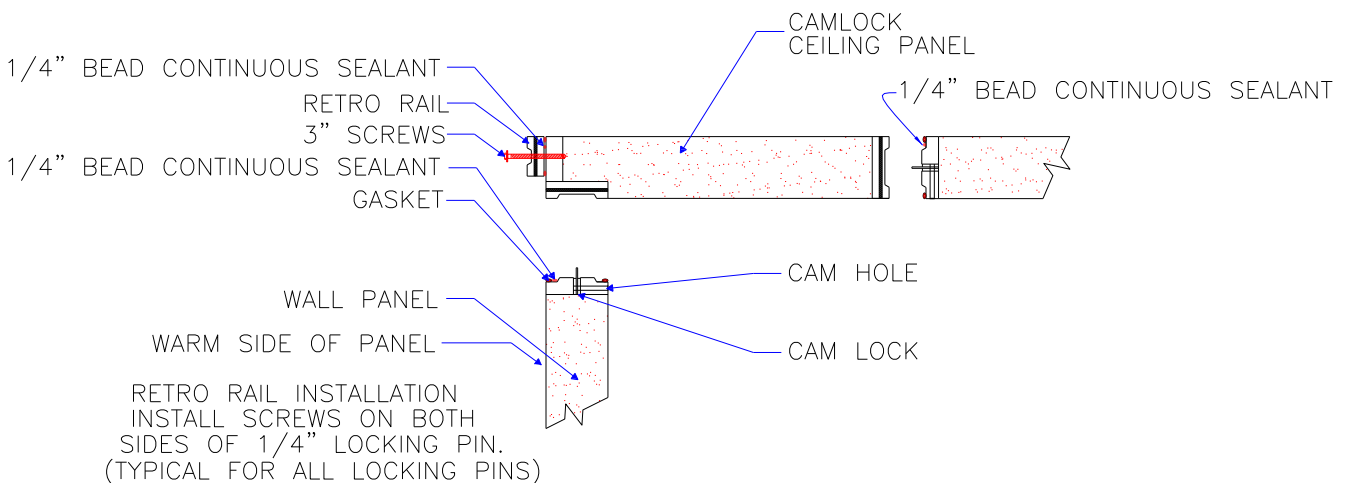
The cam lock style ceiling is available as an option. Cam lock ceiling panels are placed on top of the wall panels as they are erected, and the ceiling locks down to the walls. The cam down ceiling should be properly sealed prior to cycling cam locks from inside the walk-in. It is very important to place a large bead of sealant on the male edge behind the gasket (Warm side of panel, nearest the exterior) before fitting them together. Butyl is the preferred sealant for freezers. Failure to properly seal seams as instructed can cause panel damage and voids the warranty.

#### TYPICAL CAM DOWN CEILING



A CEILING RETRO RAIL IS USED WITH COMBO BOXES THAT HAVE A DIFFERENT CEILING THICKNESS. THE RETRO IS TYPICALLY ON THE COOLER SIDE.

#### TYPICAL CAM DOWN CEILING WITH RETRO RAIL





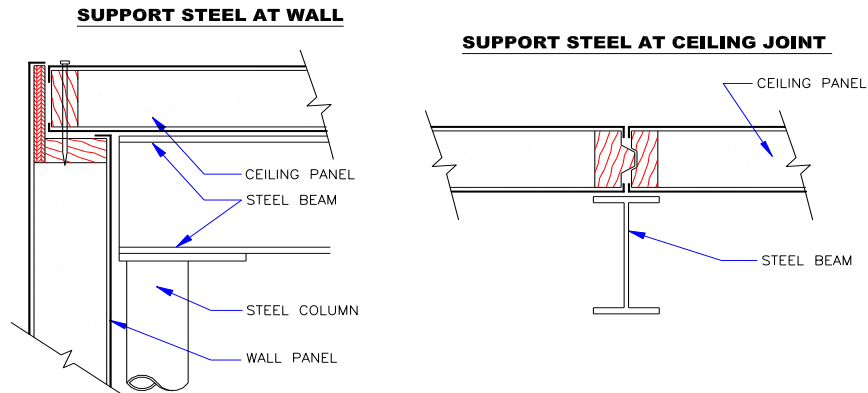
Walk-In Coolers & Freezers

## Installation Manual

### Ceiling Support Details

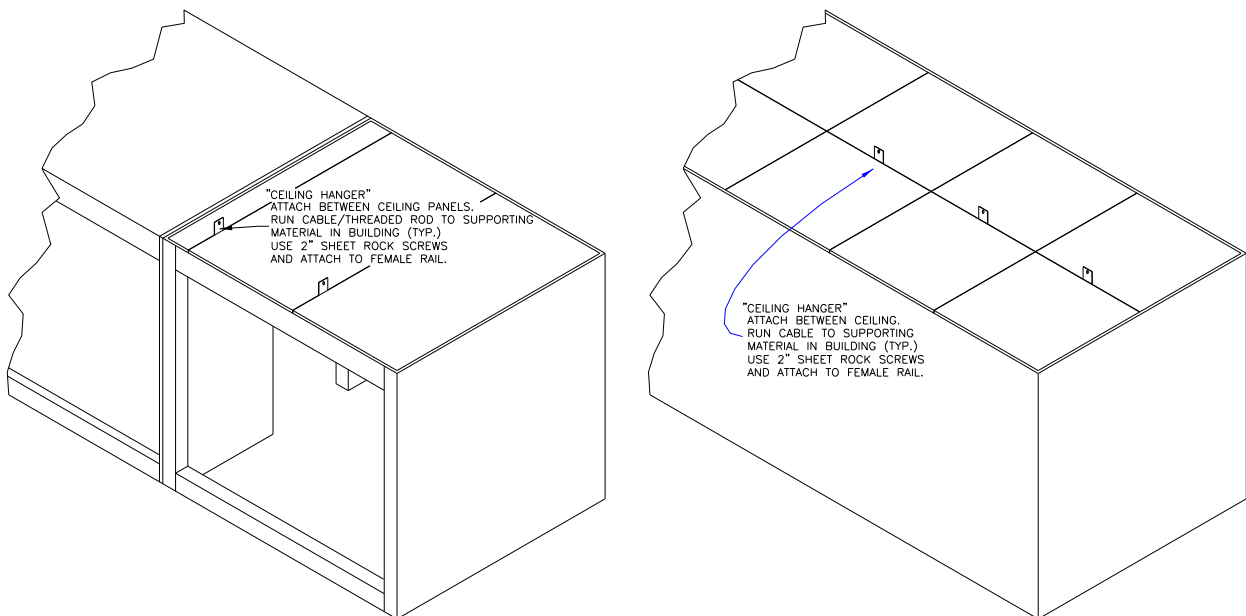
There are various methods to support a ceiling. The most common methods are shown in the following drawings.

#### Interior Ceiling Support Details



#### Exterior Ceiling Support Details

When a rough (buck) opening is required in a walk-in wall, and/or when split ceiling panels are needed, it is necessary to support the ceiling panels above the opening area and/or at the split ceiling panel seams. This support is done by use of ceiling hangers and suspension materials (see detail below). The ceiling hanger is fastened to the female rail of the panel by (2) 2"-3" sheet rock screws before installing the ceiling panel. After panel is installed, the suspension material is attached to the overhead building structure and to the hanger bracket. The length of suspension material is adjusted until tension of material is observed to relieve weight on door frame area and inside height of walk-in is correct. Ceiling hangers are required for ceiling panel lengths of 12' to 16'. (Supporting material such as Cable or Threaded rod is supplied by others)



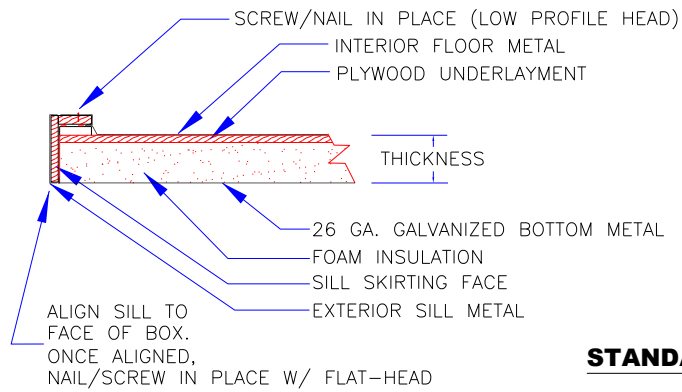


Walk-In Coolers & Freezers

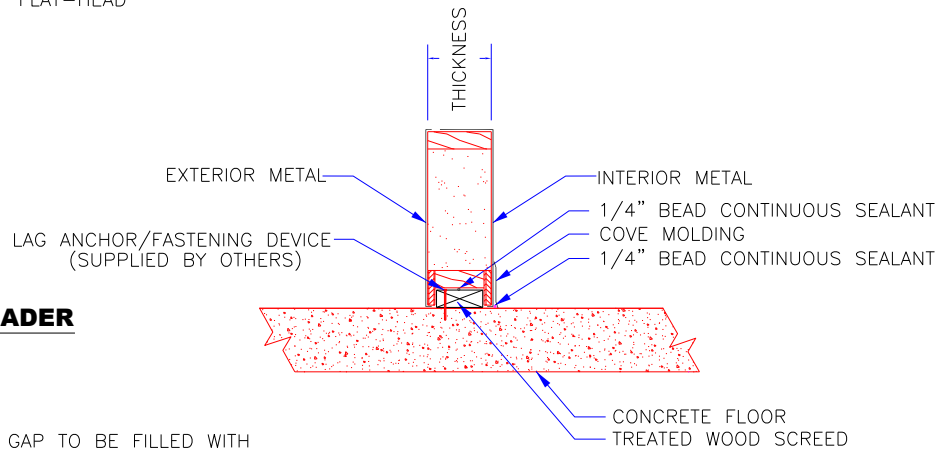
## Installation Manual

### Header and Sill Details

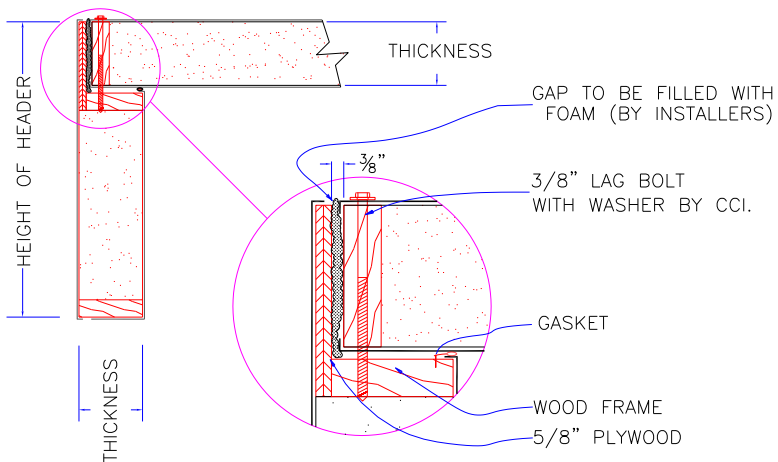
#### STANDARD SILL WITH FLOOR



#### STANDARD SILL NO FLOOR



#### STANDARD LAG DOWN HEADER

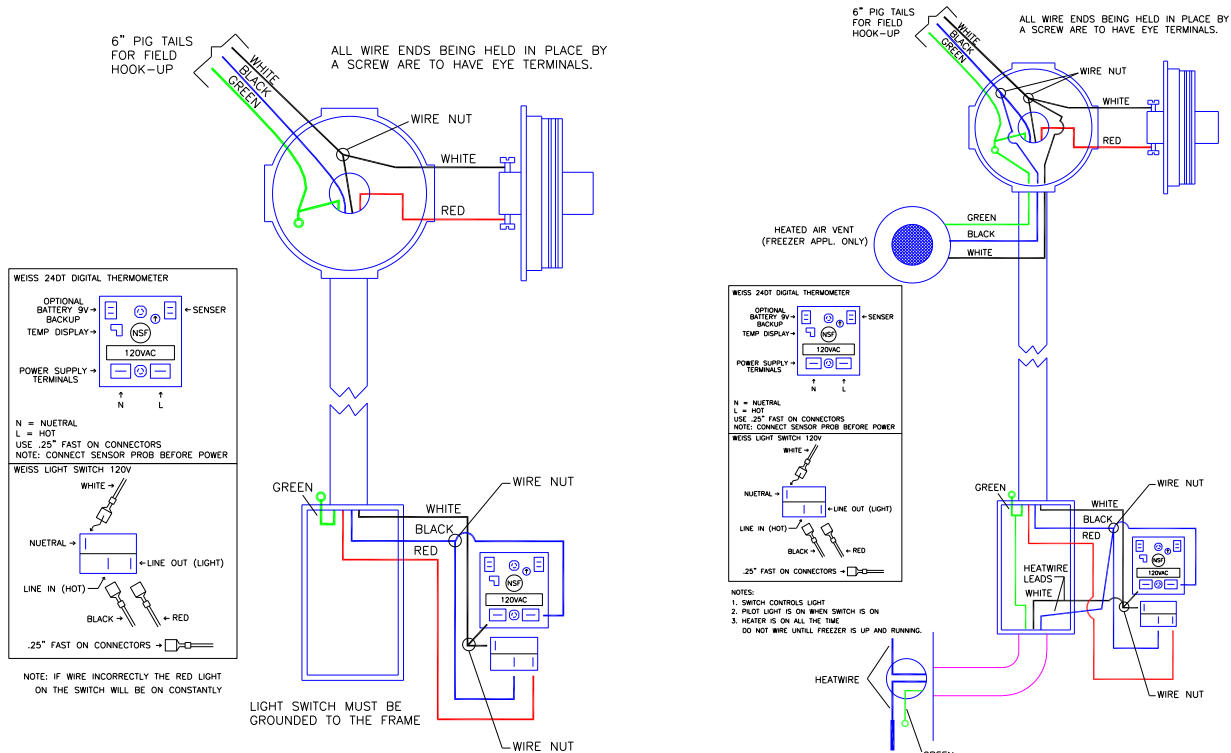






## Installation Manual

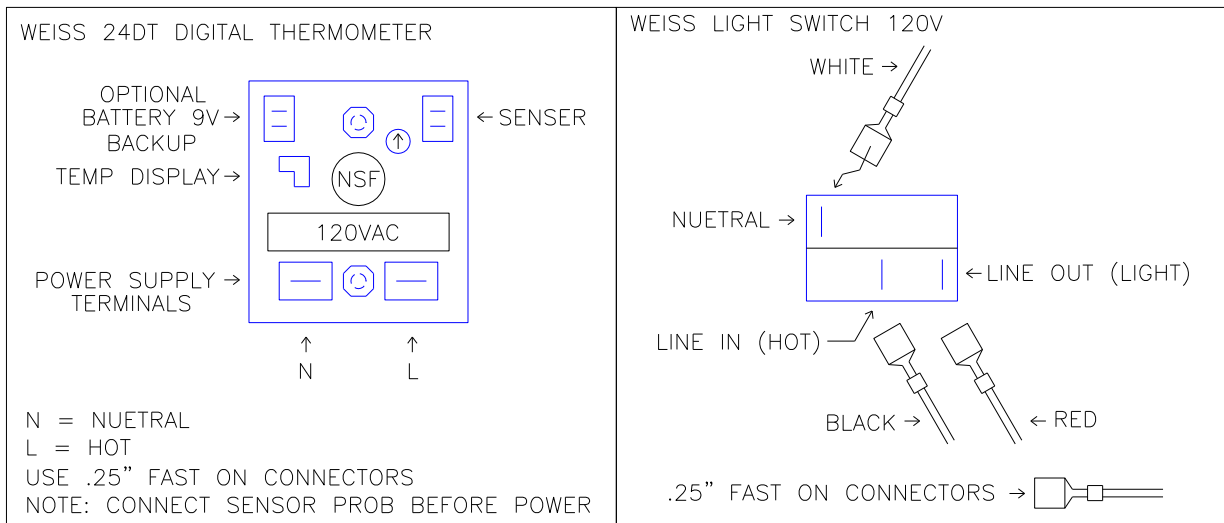
### Walk-In Coolers & Freezers



**Cooler Door Electrical Diagram  
Weiss Switch & Digital Thermometer**

**Freezer Door Electrical Diagram  
Weiss Switch & Digital Thermometer**

## WEISS SWITCH AND DIGITAL THERMOMETER

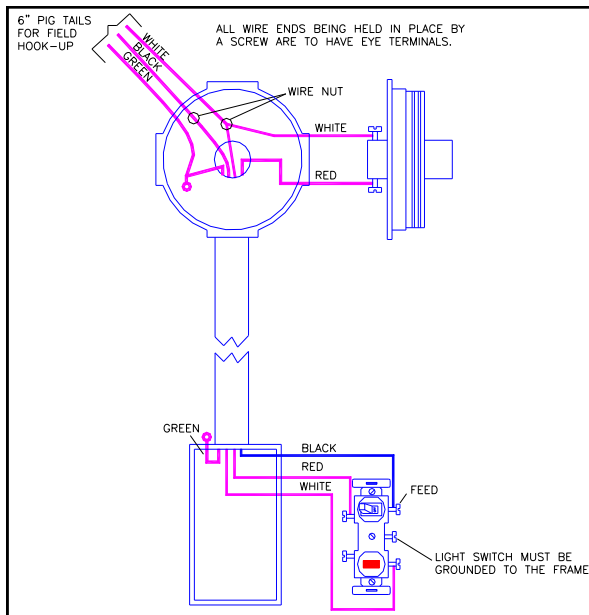


All Doors are 115/60/1. The light switch is rated for 15 amps.  
**Warning!** Do not turn on heat wire until refrigeration is running, as the heat wire may short out from excessive heat.

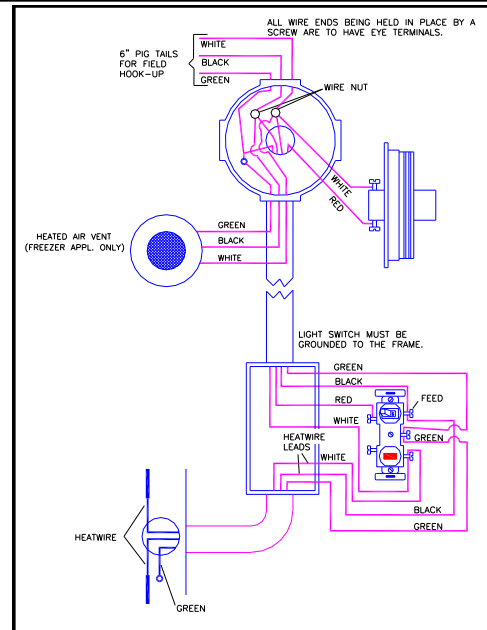


## Installation Manual

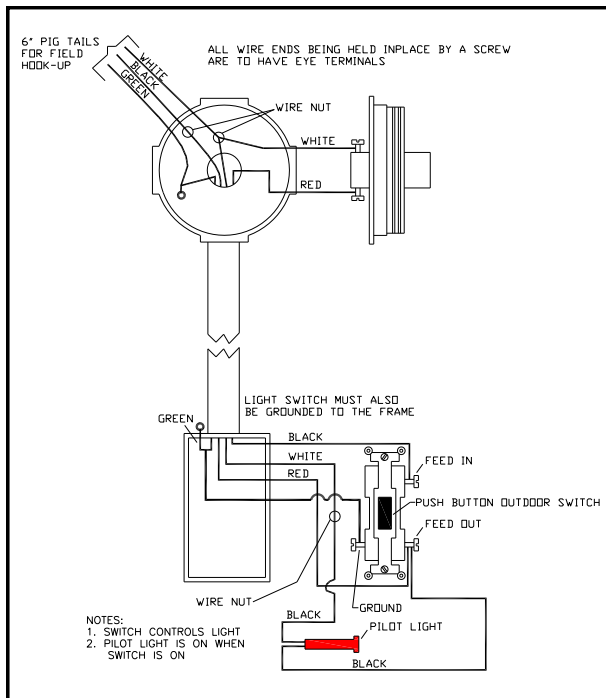
### Walk-In Coolers & Freezers



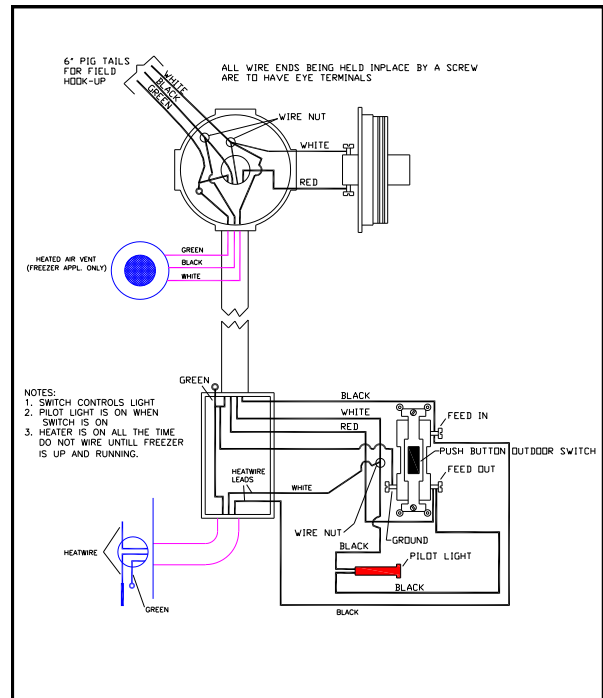
**Cooler Door Electrical Diagram**



**Freezer Door Electrical Diagram**



**Cooler Door Electrical Diagram  
Outdoor Hubbell Switch**



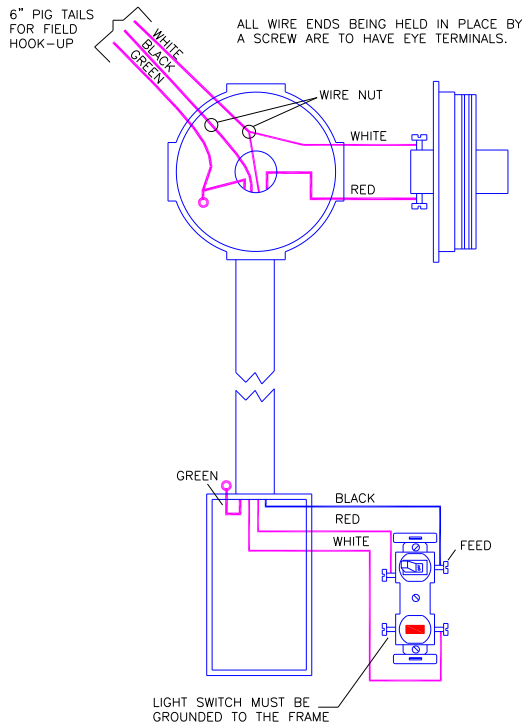
**Freezer Door Electrical Diagram  
Outdoor Hubbell Switch**

All Doors are 115/60/1. The light switch is rated for 15 amps.  
Warning! Do not turn on heat wire until refrigeration is running, as the heat wire may short out from excessive heat.

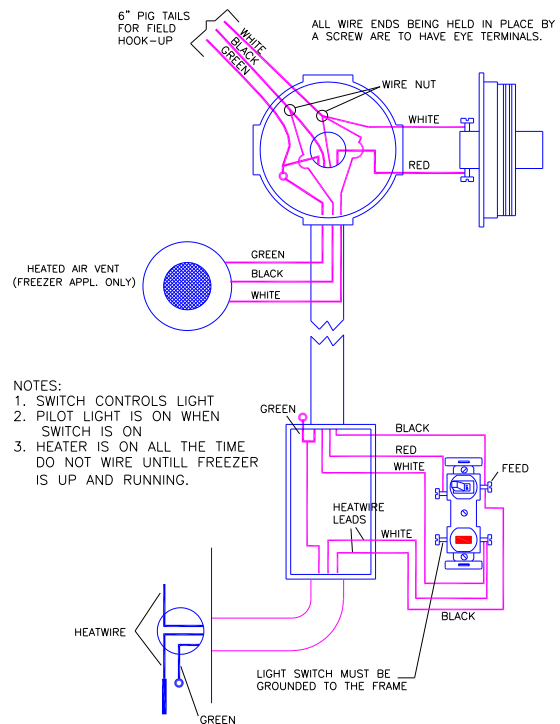


## Installation Manual

### Walk-In Coolers & Freezers



**Cooler Door Electrical Diagram**  
**Leviton Switch**



**Freezer Door Electrical Diagram**  
**Leviton Switch**

### Electrical Information

Door Size	Light	Door Frame-Heater	Optional Vision Port	Pressure Relief Port (Freezer Only)	Heated Door Plug
30" Wide	23 watt CFL Max	1.06 Amps	.6 Amps	.2 Amps	3.6 Amps
34" Wide	23 watt CFL Max	1.06 Amps	.6 Amps	.2 Amps	3.76 Amps
36" Wide	23 watt CFL Max	1.06 Amps	.6 Amps	.2 Amps	3.8 Amps
42" Wide	23 watt CFL Max	1.17 Amps	.6 Amps	.2 Amps	4.0 Amps
48" Wide	23 watt CFL Max	1.26 Amps	.6 Amps	.2 Amps	4.2 Amps
54" Wide	23 watt CFL Max	1.35 Amps	.6 Amps	.2 Amps	4.4 Amps
60" Wide	23 watt CFL Max	1.43 Amps	.6 Amps	.2 Amps	4.6 Amps
30"X36"	N/A	.52 Amps	N/A	.2 Amps	
24"X34"	N/A	.48 Amps	N/A	.2 Amps	
24"X63"	N/A	.70 Amps	N/A	.2 Amps	

All Doors are 115/60/1. The light switch is rated for 15 amps.  
Warning! Do not turn on heat wire until refrigeration is running, as the heat wire may short out from excessive heat.



Walk-In Coolers & Freezers

## Installation Manual

### **Membrane Roof cap Installation Instructions** **(Free Standing)**

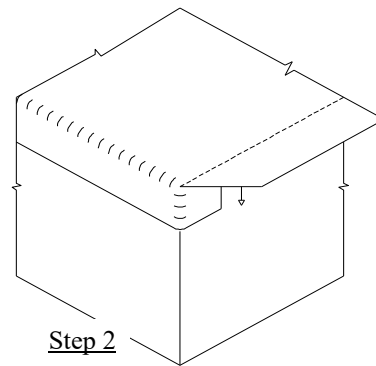
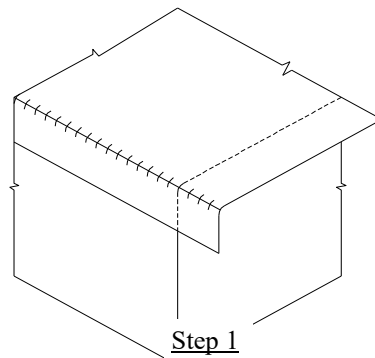
These instructions are for installing Pro-Shield EPDM material on a walk-in cooler with no parapet walls. This is a loose-laid, one piece installation with no roof penetrations.

Step 1: Unroll the EPDM (rubber) sheet and center in on the roof so it overlaps the edge on all sides by a minimum of 3 inches. Allow the material to relax for at least 10 minutes.

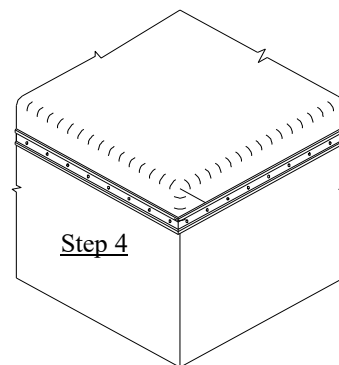
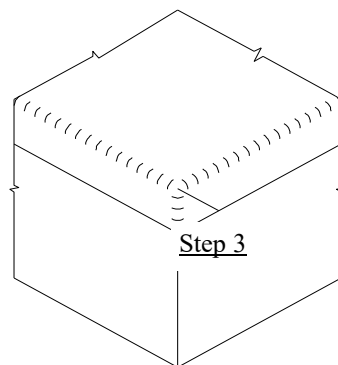
Step 2: Start at one corner and fasten the termination bar one the side of the cooler a minimum of ½ inch below the roof line. The termination bar should be fastened with the angle toward the ground and kicking out from the side of the cooler. Slightly tug the rubber below the bar and drive the screw in at a slight downward angle. Do not stretch the rubber.

Step 3: Continue fastening the termination bar until you reach the corner. The termination bar can either be butted at the corner, or can be bent around the corner. Tuck and fold the corner as illustrated in the figure below. Continue attaching termination bar and folding the corners until the entire roof is secured. Put a screw in every hole in the termination bar.

Step 5: Using a razor blade knife, trim the excess rubber below the termination bar (use knife with caution).



Corner Fold Detail





Walk-In Coolers & Freezers

## Installation Manual

### Membrane Roof cap Installation Instructions (Attaching to building)

Step 1: Check the roof top of the walk-in and remove any foreign matter. Recess the lag bolts and seal all protruding rough edges with caulk. This will prevent any chance of penetrating or wearing a hole in the membrane roof cap.

Step 2: Verify the overall length & width of the membrane roof cap. The membrane should be long enough to overlap 6" on three sides of the walk-in and when unrolled a 8'-12" reverse piece will appear. This side is to be aligned along the building wall.

Step 3: The smooth (shiny) finish surface of the white or gray membrane is the exposed side. If tan material is used the rough side is exposed. The 3" fastening tabs are on the bottom side of the membrane.

Step 4: Start at the end attaching to the building. Attach the first 3" fastening tab to the base of the building wall where it meets the walk-in. This needs to be far enough up the wall that the entire 3" tab is on the building. Start in the middle of the walk-in and attach this using 1-1/2" screws and the Duro-Last poly plates provided every 12" on center. After the first tab is secured the 8'-12" reverse piece can be fastened to the building using the termination bar and the 1-1/2" screws fastened 6" on center also starting in the center. When this is completed a bead of sealant should be applied above the termination bar at the connection to the building.

Step 5: Continue over the rest of the unit, fasten the 3" tabs by using the 1-1/2" self-tapping screws and fastening plates. Always start in the center and work toward the edges placing the screws and plates 12" on center along the fastening tabs. Always pull the slack out of the membrane before starting another row of fasteners. Vice grips are ideal for this process.

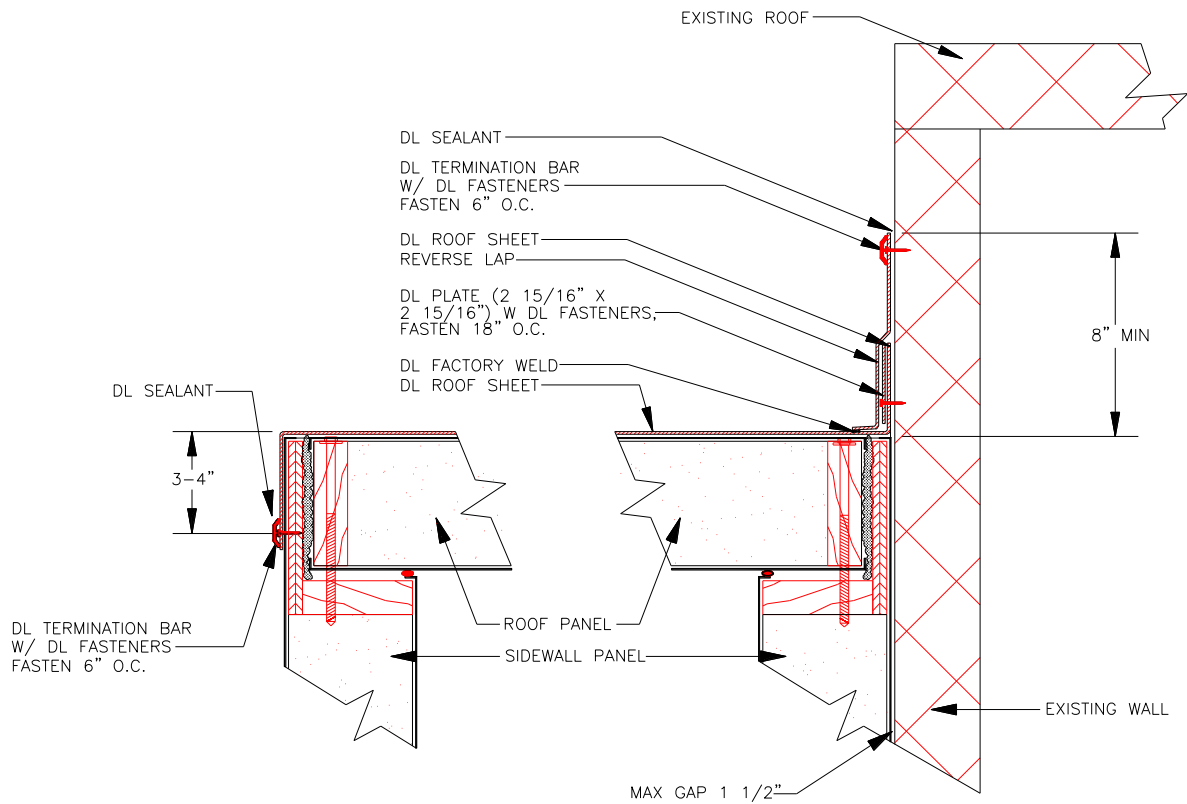
Step 6: Upon completion of the fastening tabs on the roof cap, tuck and fold corners as shown in illustration and install termination trim around the perimeter of the walk in unit, approximately 3-4" down the sides of the walk-in. They can either be butted at corners or be bent around them. Use the 1-1/2" screws spaced at least every 6" on center, driving them in at a slight downward angle. Then use a razor blade knife to trim the excess rubber below the termination bars AFTER the entire roof is completed (use knife with caution).



Walk-In Coolers & Freezers

## Installation Manual

### Outdoor Membrane Roof

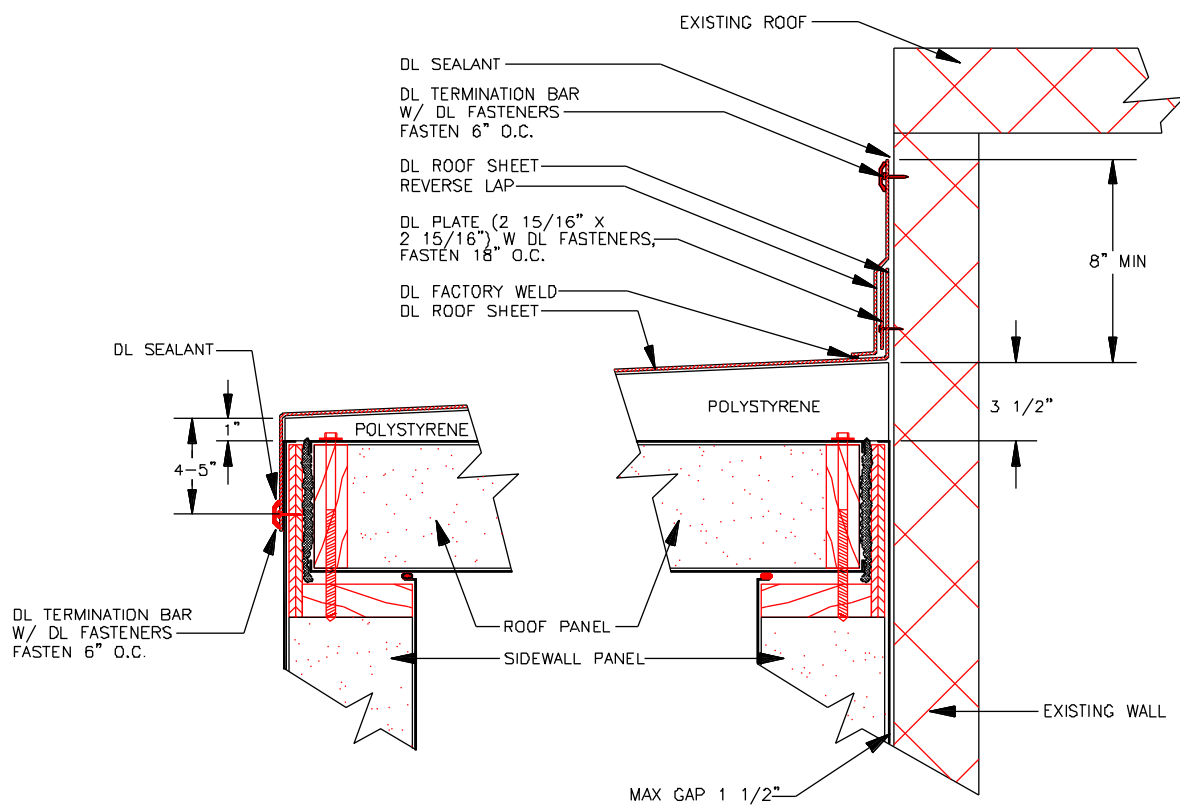




Walk-In Coolers & Freezers

## Installation Manual

### Outdoor Membrane Roof with Sloped Roof





Walk-In Coolers & Freezers

## **Installation Manual**

### **Dial Thermometer Calibration**

Your dial thermometer is an accurate thermometer that conforms to NSF standards. This standard states that the thermometer must be accurate within plus or minus 2 degrees Fahrenheit.

The thermometer should be checked after installation because of the possible rough handling during shipment. To adjust the thermometer you should fill a 32 ounce cup with ice and cold water. Place the thermometer probe in the cup for approximately 1 minute for the temperature reading. The temperature should read 32 degrees Fahrenheit, plus or minus 2 degrees Fahrenheit. If the thermometer needs adjustment remove lens assembly and place index finger at left side of the wide end of pointer, close to the hub. Insert small screwdriver in pointer slot and turn slowly clockwise for lower temperature and counter-clockwise for a higher setting. Adjust to proper setting and replace lens assembly.

If the needle has fallen off during shipment, remove lens assembly, put needle on stem with pointer down (6 o'clock). Gently press needle on stem. Test and calibrate using the procedure described above. Replace lens assembly.

### **Final Inspection**

1. All locks are engaged and wrench ports closed with cap buttons.
2. Entrance door operates smoothly and seals properly.
3. Thermometer has been adjusted to proper temperature.
4. All excess sealant has been removed and residue cleaned up with proper cleaner.

### **Maintenance**

1. Wipe up spills with warm water and mild soap. (**never use caustic or abrasive cleaners**)
2. To clean up dirt or fingerprints from wall surfaces, use the same procedure above.
3. Clean door gaskets regularly.
4. Check and lubricate door hinges using petroleum jelly as needed.
5. If any hardware becomes loose or malfunctions, contact **LEER, INC.** for information or replacement.
6. The top of the walk-in is not a storage area. Damage caused by the storage of anything on the top of the walk-in is not covered by warranty.
7. When cleaning floor panels of a walk-in with a manufactured panel floor, never use excessive water or a wet mop. Excess water will penetrate panel seams and cause wood rot, or will freeze and create structural damage that is not covered by warranty.





Walk-In Coolers & Freezers

## Installation Manual

### LEER INC. WALK-IN WARRANTY QUICK REFERENCE GUIDE\*

Walk-In Warranty (Cooler, Freezer, Combo Box, Customer, or Quick Ship)			
Panels	Labor	Start Date	Notes
10-Years	Not Included	Ship Date + 30-Days	Replacement Panels
Parts	Labor	Start Date	Notes
1-Year	30-Days	Ship Date + 30-Days	

Remote / Split System Refrigeration Equipment Warranty			
Parts	Labor	Start Date	Notes
1-Year	30-Days	Ship Date + 30-Days	

Drop-In / Self-Contained Refrigeration Equipment Warranty			
Parts	Labor	Start Date	Notes
2-Years	30-Days	Ship Date + 30-Days	

Optional Extended Remote Refrigeration / Split System Compressor Warranty			
Parts	Labor	Start Date	Notes
4-Additional Years	Not Included	Completion of Standard Warranty	Additional Cost

Optional Extended Drop-In Refrigeration / Self-Contained / Pro3 Compressor Warranty			
Parts	Labor	Start Date	Notes
3-Additional Years	Not Included	Completion of Standard Warranty	Additional Cost

Optional Extended Refrigeration Labor Warranty			
Parts	Labor	Start Date	Notes
Not Included	1-Additional Year	Completion of Standard Warranty	Additional Cost



Walk-In Coolers & Freezers

## **Installation Manual**

### **WARRANTY CLAIM PROCESS**

For Warranty claims, contact Leer's Customer Service Department at 1-800-766-5337 or [warrantyclaims@leerinc.com](mailto:warrantyclaims@leerinc.com). Leer's Technical Support Team is available to assist with diagnostics and proper Warranty claim procedures. End User is not required to obtain authorization from Leer prior to servicing a defective Product, provided that Leer reserves the right to review and dispute claims.

**All Warranty claims must be submitted within thirty (30) days of the repair to be considered. Incomplete and/or late submissions may be denied.**

### **REQUIRED INFORMATION FOR ALL WARRANTY CLAIMS**

To submit a claim under this Warranty, please include the information below and as requested on the Leer Walk-In Warranty Claim Form:

- End User's full name, address, and contact phone number.
- Model and serial number of the Product (the model and serial number is located on the tag typically located on the inside hinge side frame of the door).
- Model and serial number of condensing unit or evaporator coil.
- Job site name, address, and contact phone number (if different than End User's).
- Service provider's full name, address, and contact phone number.
- Full name, address, and contact phone number of End User and, if applicable, institution seeking reimbursement on behalf of End User.
- Current W9 of the person or institution seeking reimbursement on behalf of End User.
- Complete and accurate description of the problem or issue being repaired.
- Complete and accurate description of the service rendered to correct the issue.
- Complete and accurate itemized bill of materials including, but not limited to, parts, labor (hours and rates), and related charges, if applicable.
- For replacement parts available and manufactured by Leer, but which End User purchases from a third party, End User must provide the receipt indicating the price paid. If a receipt is not included, reimbursement will be made according to Leer's wholesale cost. During the applicable warranty period, replacement parts not sold by Leer that are not OEM are to be obtained from a replacement parts wholesaler.
- For Compressor claims only, include a copy of the receipt indicating the price paid along with a copy of the core credit receipt, if applicable.
- For Compressor claims only, include a copy of the Compressor serial tag clearly showing the Compressor model and serial number.

\* Please see the full text of the Walk-In Warranty Packet at [leerinc.com/terms-of-service/](http://leerinc.com/terms-of-service/) for the warranty terms and exclusions to the warranty, as well as other important terms and conditions.



Walk-In Coolers & Freezers

## Installation Manual

### NOTES